



# HITACHI

## Advanced Open MRI AIRIS Vento 05



All advanced mid-field applications

Variety of fat-saturation techniques

Complementary or unique – the best solution for outpatient centres

Patient-friendly design

Low noise emission

Cost-effective

SENTINEL™ remote monitoring for maximum uptime

Technical cabinet only - no water cooling

Average power consumption only 2.5 kW

[www.futuremed-tr.com](http://www.futuremed-tr.com)



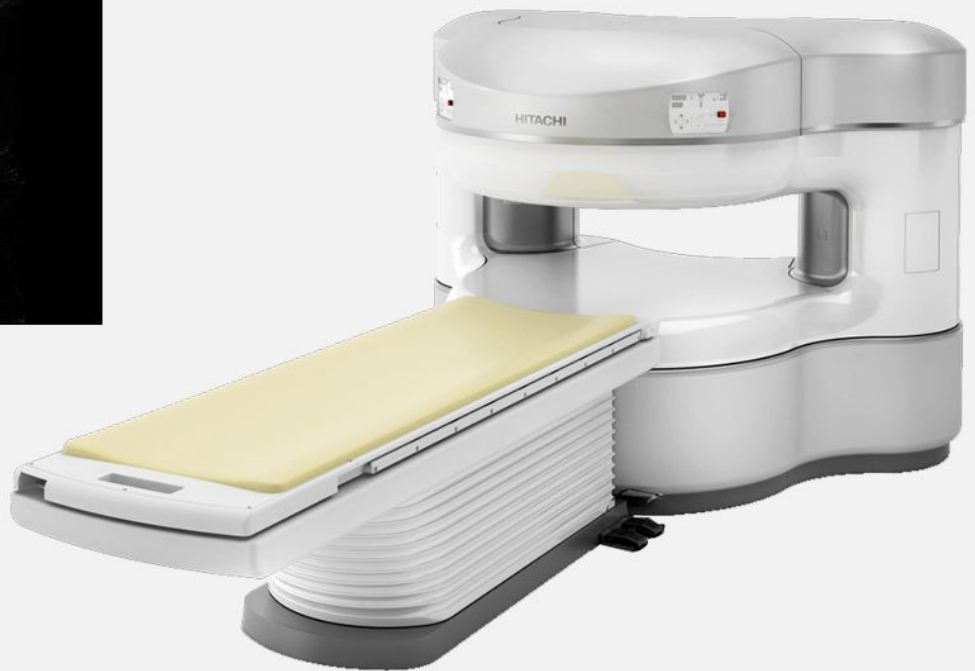
# HITACHI

## AIRIS Vento 05

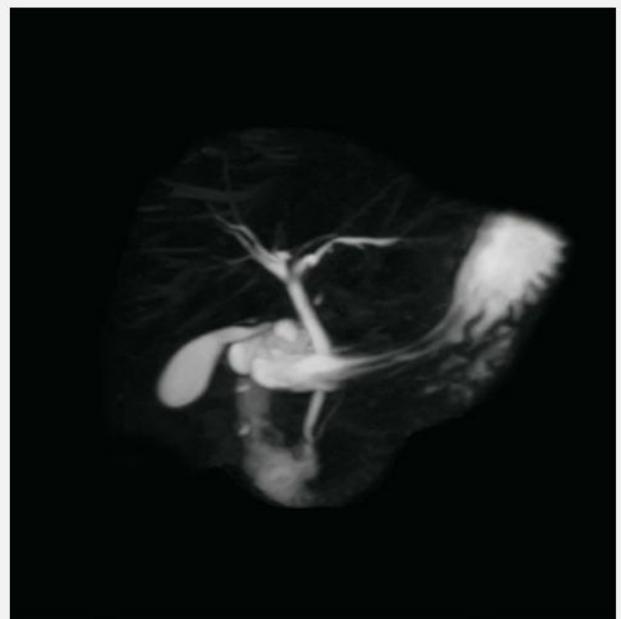


Urography

### Advanced Open MRI



3D TOF



MRCP

[www.futuremed-tr.com](http://www.futuremed-tr.com)



# HITACHI

## AIRIS Vento 05



Advanced Open **MRI**

0.3 Tesla field strength

Two-pillar design

Asymmetric two-pillar design for maximum openness

210° opening to the front, 70° opening to the rear

22mT/m 55T/m/s gradients

Installation < 25m<sup>2</sup>

Fully motorized patient table

Lateral table movement ±100 mm

[www.futuremed-tr.com](http://www.futuremed-tr.com)



# HITACHI

## AIRIS Vento 05

### Advanced Open **MRI**



PD FatSat



3D GEIR

### **FUTUREMED**

Halil Rifat Paşa Mah. Yüzer Havuz sk.

Perpa Ticaret Merkezi B Blok Kat.5

NO:184 Şişli / İstanbul / Turkey

+(90) 212 210 21 42

[info@futuremed-tr.com](mailto:info@futuremed-tr.com)

[www.futuremed-tr.com](http://www.futuremed-tr.com)