



FUTURE MED İÇ VE DIŐTİCARET LTD.ŐTİ

# FUJIFILM

## FCR *PRIMA* *ITm*



[www.futuremed-tr.com](http://www.futuremed-tr.com)

 :+(90) 533 784 42 95





# FUJIFILM

FCR PRIMA <sup>Tm</sup>

**0.30** m<sup>2</sup>  
footprint

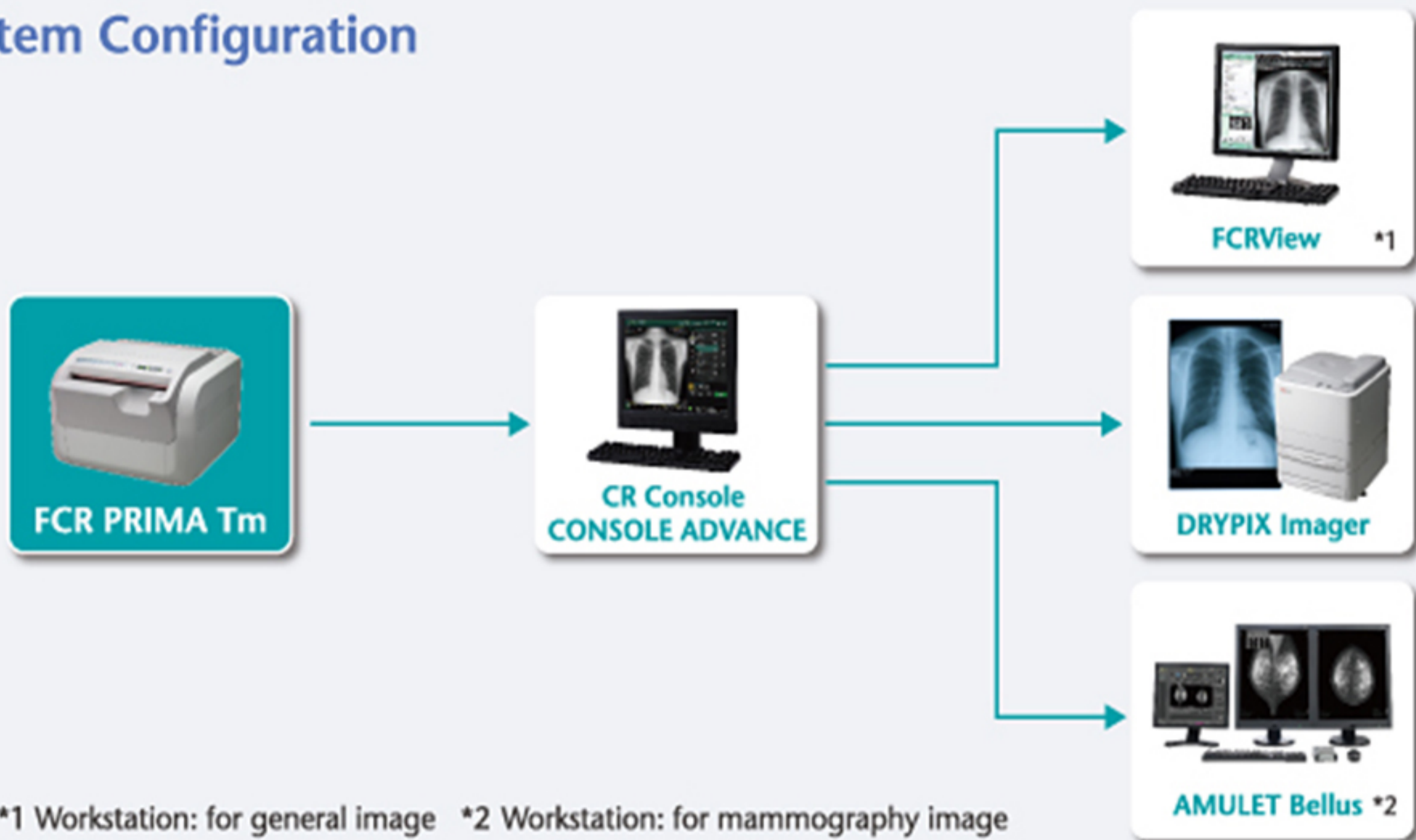
**54 × 56** cm  
size

**39** kg  
weight

*Image  
Intelligence™*



## System Configuration

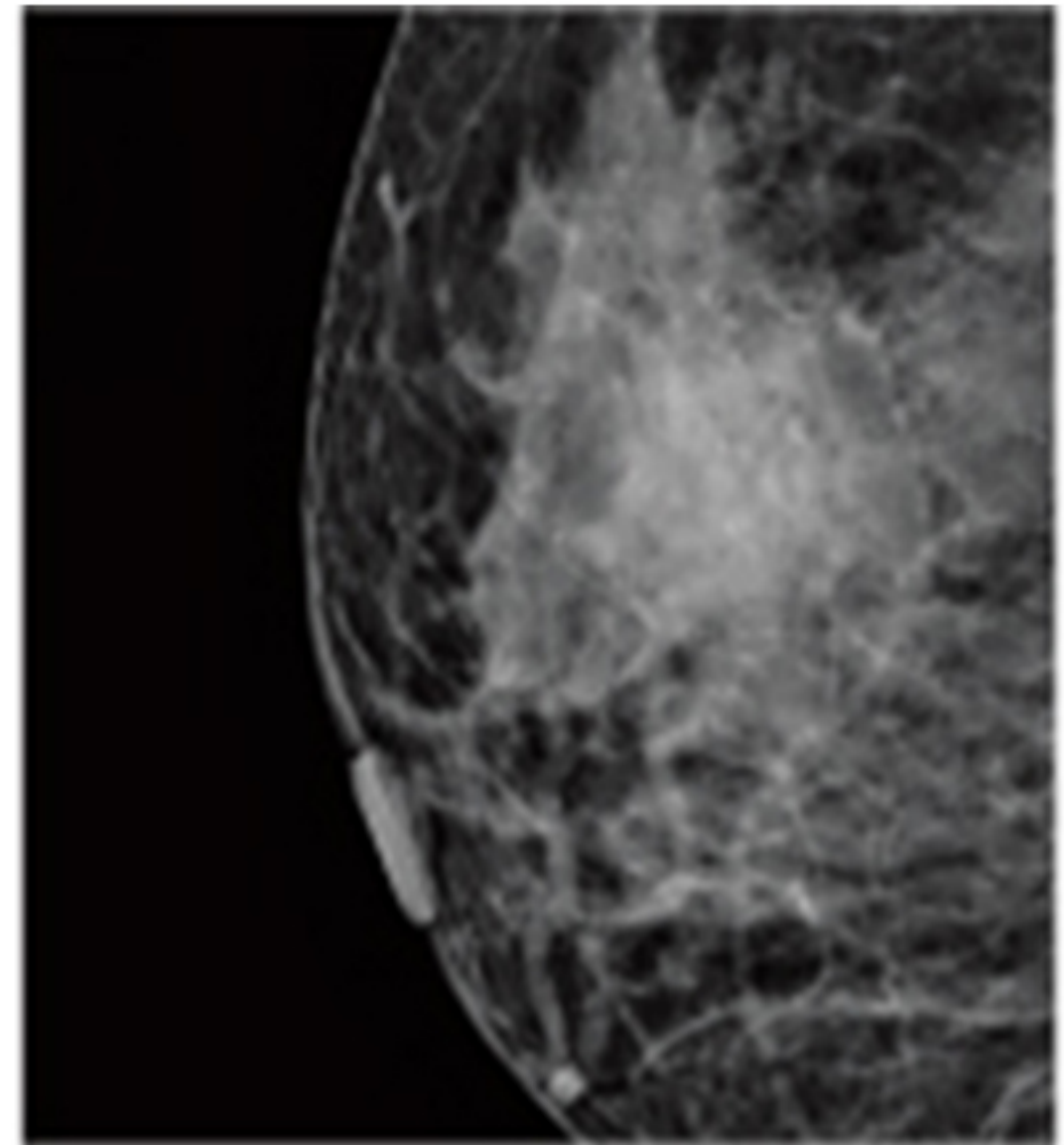
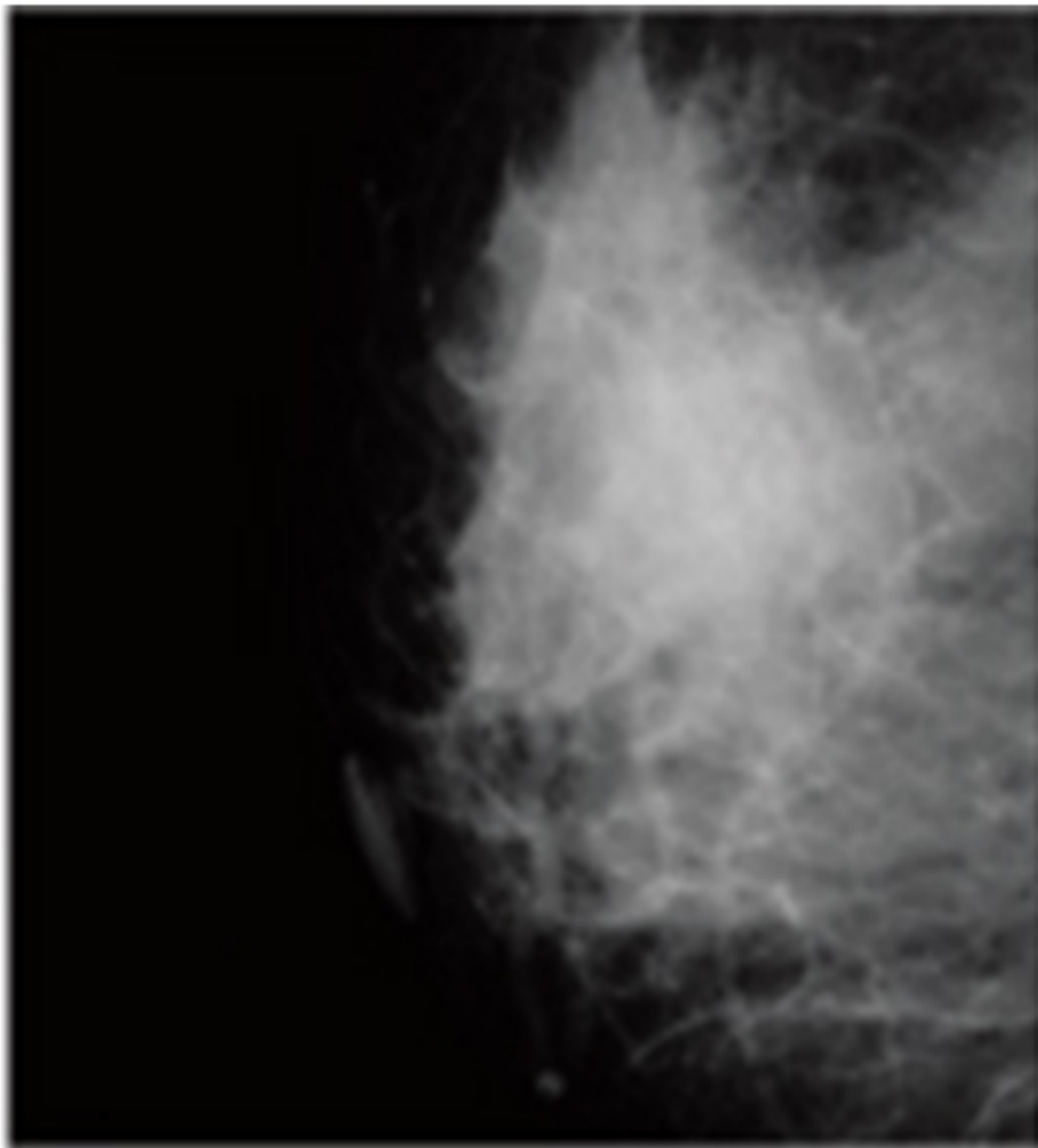


\*1 Workstation: for general image \*2 Workstation: for mammography image



**High-quality mammography images**

Fujifilm's Image Intelligence™ technology automatically enables stable and optimized high-quality images.



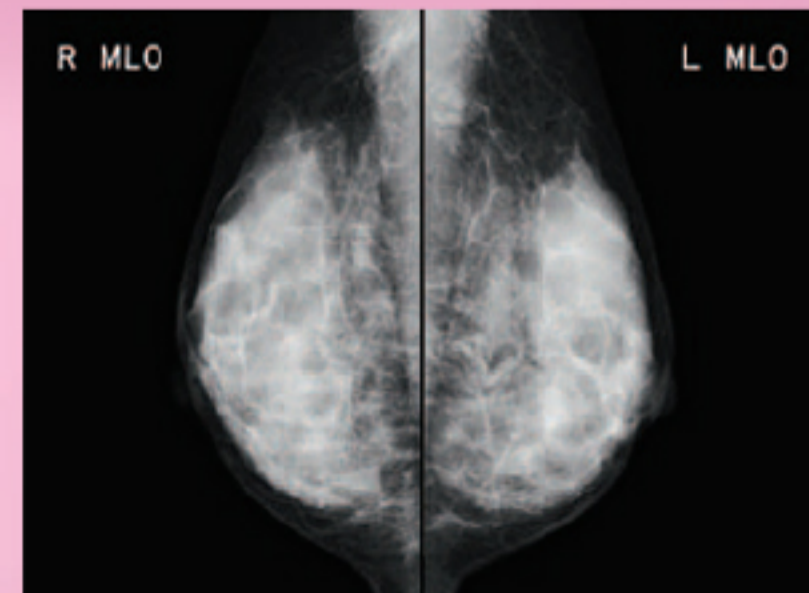
**Compatible with  
multiple cassette sizes,  
covering a wide range of  
examination**

Cassettes of any size can be read. This instrument is applicable to a variety of test settings, ranging from long-view imaging of the entire length of the vertebra or lower limbs to pantomography.



**Realizing 50 μm  
high-definition reading of  
mammography images**

For the first time in the PRIMA series, the model is equipped with a mammography image reading function. With high definition reading and the fastest processing in the tabletop class, this model brings about a seamless workflow to your diagnosis.





# FUJIFILM

FCR *PRIMA*™



## High-Speed Processing

With the highest processing speed in its class, this model can process 73 images per hour. In addition, 40 mammography images can be processed within an hour, allowing smooth image reading.



Approx.  
**33**sec.



Type CC  
(18 × 24 cm)



Type CH for Mammography  
(18 × 24 cm)

## High-Quality Mammography Images

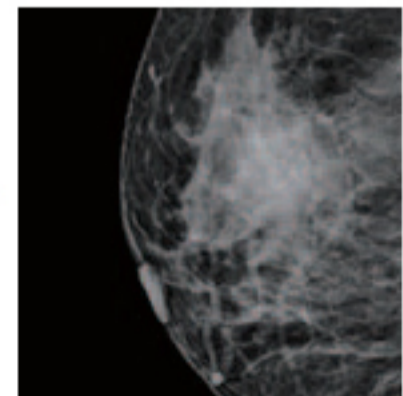
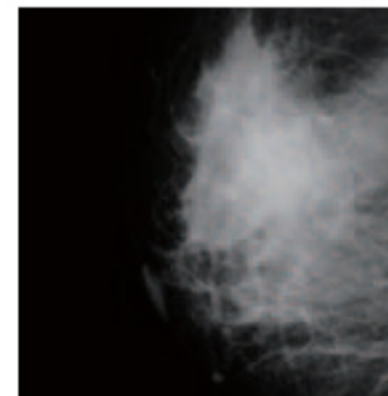
Fujifilm's Image Intelligence™ technology automatically enables stable and optimized high-quality images.



## Multi-Frequency Processing

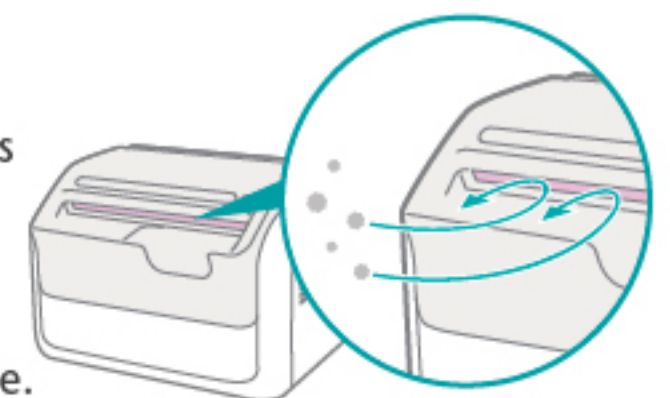
\*Optional software

Enhances FCR images. All diagnostic scopes will be enhanced except for noise.



## Dust-proof Mechanism

The insertion slot of the cassette is equipped with functions that prevent the entry of dust and automatically clean the inside of the instrument to remain dust-free.





## FCR PRIMA Tm Specifications

Standard Components	FCR PRIMA Tm (Model: CR-IR 392)		Processing Capacity	Up to 73 IPs/hr.
Applicable Console	CR Console, Console Advance		Reading Specification	10 pixels/mm, 5 pixels/mm, 20 pixels/mm
Main Connectable Imagers	DRYPIX PRIMA, DRYPIX 4000, DRYPIX 5000, DRYPIX 7000, DRYPIX Plus, DRYPIX Smart		Time to Start on Display	Min. 33 sec.
Supplies	Imaging Plate	ST-VI (standard type) 35 x 43 cm (14" x 17"), 35 x 35 cm (14" x 14"), 10" x 12", 8" x 10", 24 x 30 cm, 18 x 24 cm, 15 x 30 cm HR-VI (high-resolution type) 24 x 30 cm, 18 x 24 cm	Time to Print on DRYPIX Smart	Approx. 165 sec. (Approx. 155 sec.)* in case of 35 x 43 cm (14" x 17")
	IP Cassette	Type CC 35 x 43 cm (14" x 17"), 35 x 35 cm (14" x 14"), 10" x 12", 8" x 10", 24 x 30 cm, 18 x 24 cm, 15 x 30 cm Type CH 24 x 30 cm, 18 x 24 cm Type LC 35.4 x 124.5 cm, 35.4 x 101.7 cm, 35.4 x 83.0 cm, 25.2 x 58.0 cm, 24.0 x 57.0 cm	Number of Stacker	1
Time Required for IP Feed/Load	Min. 49 sec.		Network	10 Base T/100 Base TX
			Dimensions (W x D x H)	560 x 540 x 392 mm (22" x 21" x 15")
			Weight	39 kg (86 lbs.)
			Power Supply Conditions	Single phase 50-60 Hz AC120-240V ±10% 1.9A (max)
			Environmental Conditions	Operating Conditions: • Temperature: 15-30°C • Humidity: 15-80%RH (No dew condensation) • Atmospheric pressure: 750-1060hPa

### ● Compatible with CR Console/Console Advance

The CR Console/Console Advance optimizes your mammography examinations with its advanced design and features. Correspondence to Fujifilm Mammography QC Program with 1Shot Phantom.



### ● Compatible with Fujifilm Mammography QC Program

Fujifilm Mammography QC Program is a dedicated quality control program applicable to FUJIFILM digital mammography system. This program enables the system to keep a stable image quality for both screening and diagnosis.



## FUTURE MED

Halil Rıfat Paşa Mah. Yüzer Havuz sk.  
Perpa Ticaret Merkezi B Blok Kat.5  
NO:184 Şişli / İstanbul / Turkey

Tel : +(90) 212 210 21 42

Mobile/WhatsApp :(+90) 533 784 42 95

email : info@futuremed-tr.com

