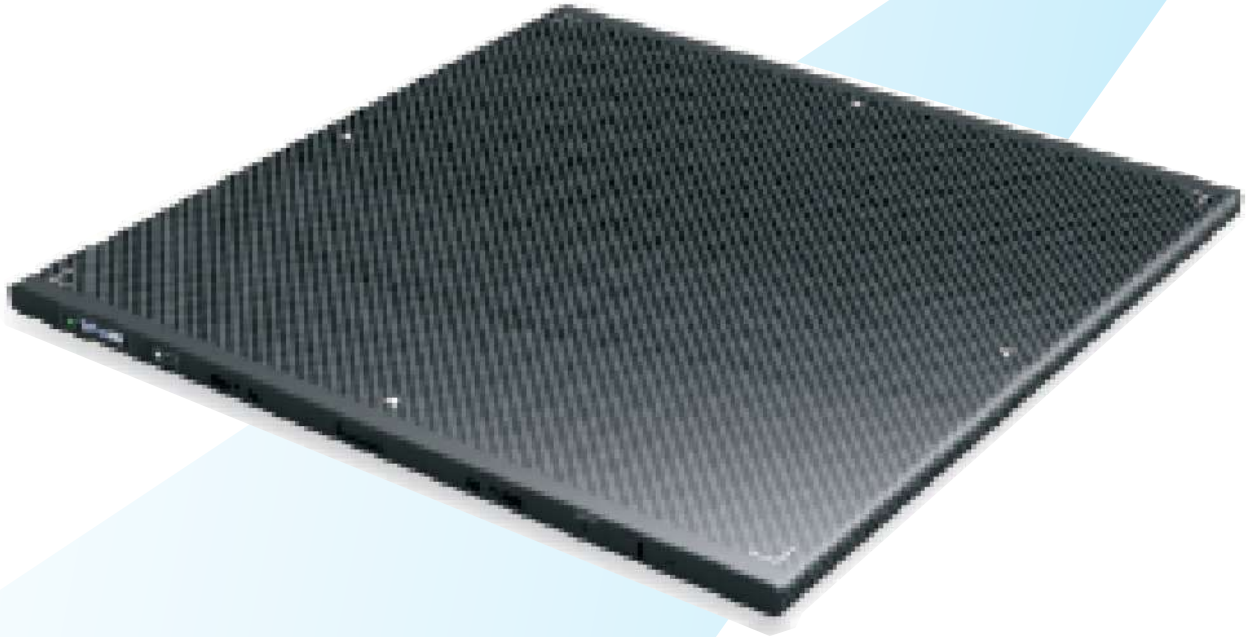




FUTURE MED İÇ VE DIŐ TİCARET LTD.ŐTİ

VFM-DR

(Veterinary)



Flat Panel Detector

Made in Korea

FUTUREMED

Halil Rifat PaŐa Mah. Yüzer Havuz sk.
Perpa Ticaret Merkezi B Blok Kat.5
NO:184 ŐiŐli / İstanbul / Turkey

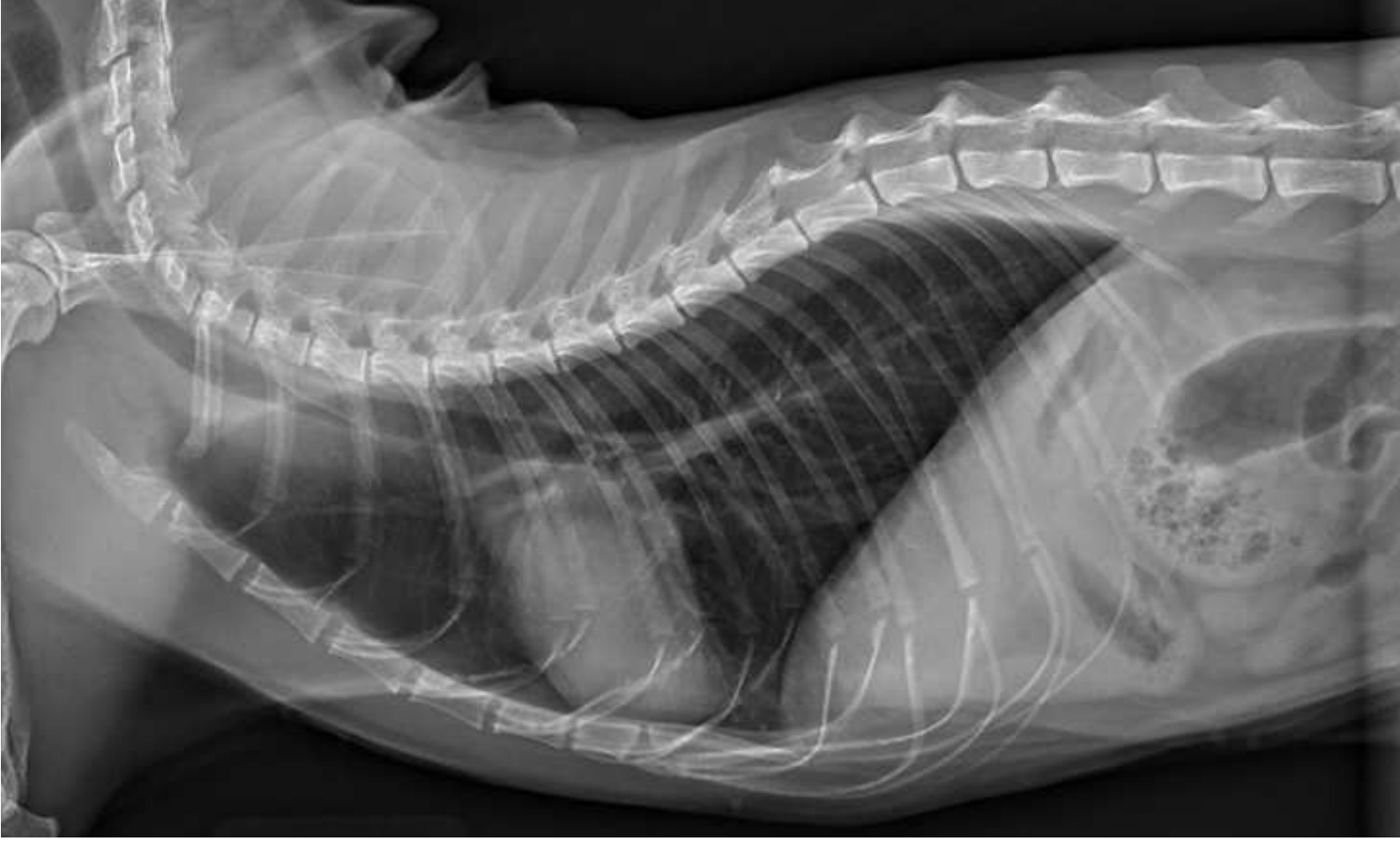
Tel : +(90) 212 210 21 42
Mobile/WhatsApp :+(90) 533 784 42 95
email : info@futuremed-tr.com

VFM-DR (Veterinary)



FUTURE MED İÇ VE DIŞ TİCARET LTD.ŞTİ

Flat-panel X-ray Detector



HDMI
Data
cable

OLED
window

Mobile
Viewing

On Board
Storage

Whole
Carbon
Body

AED^{plus}
Technology

Long
Battery
Life

VFM-DR is a flat-panel digital x-ray detector with largest image coverage for every application with features not found on any other image device

VFM-DR is equipped with not only CsI but also premium Gadox scintillator for cost effective product line and it allows high x-ray sensitivity and high image quality.

2nd generation AED technology makes continuous and stable image acquisition without any loss x-ray signal .

On board storage and mobile viewer allows user to use DR detector as like CR imaging plate , the detector provides other features that you love.



High image quality at lower dose



www.futuremed-tr.com

HFM-DR

Flat-panel X-ray Detector

**MADE IN
KOREA**



VFM-DR 30% Higher sensitivity

VFM-DR 75% Better resolution

VFM-DR 30% Higher DQE

Features

High image quality

Faster image acquisition

AED plus

Stand-alone use

On-board storage

Web viewer for mobile phone

One-piece carbon body

OLED display for status

Second generation of continuous & accurate AED provides faster and efficient image acquisition

High SNR and Low Noise at lower dose

With largest image coverage , less than 3 ~ 5 Sec

Without workstation, detector works with x-ray source in portable & mobile environment

protect any data loss by saving up to 100 images on the detector

Instant Viewer from any personal mobile devices

Full carbon fiber housing allows light and durable detector

OLED window helps user to check the status of detector

www.futuremed-tr.com

Made in Korea

VFM-DR

Flat-panel X-ray Detector



Specifications

Application	General Radiography
Conversion screen	CsI/GOS
Image data	14bit/16bit
Spatial resolution	3.6lp/mm
Sensor	a-Si TFT array Flat Panel Detector (<i>made in Germany</i>)
Sensor pixel	3.072 x 3.072 (9.4M pixels) (VFM-DR 1717) 2.560 x 3.072 (7.8M pixels) (VFM-DR 1417)
Pixel size	140 um
Trigger mode	AED(Automatic Exposure Detection), Manual Trigger
Calibration Mode	ACC(Auto Calibration Control) , Manual Calibration
Data transfer time	Less than 1sec.
Capture cycle time	3~5 sec. approx
Wired interface	Gigabit Ethernet
Wireless standard	IEEE 802.11ac
Voltage	AC 100 ~ 240V , 50/60Hz DC18V 3.5A
Battery type	Lithium ion polymer Battery
Dimensions (WxLxT)	461mm x 460mm x 15mm (VFM-DR 1717) 385mm x 460mm x 15mm (VFM-DR 1417)
Weight	2.6Kg(5.7lb), 3.0kg(6.6lb, with battery) (VFM-DR 1717) 2.4Kg(5.2lb), 2.8kg(6.1lb, with battery) (VFM-DR 1417)

Available models	Image size	Pixel Pitch	Weight
VFM-DR 1717	17X17 inch (427.25mm x 427.25mm)	140	3.0Kg(6.6lb)
VFM-DR 1417	14X17 inch (350mm x 427.25mm)	140	2.8Kg(6.1lb)

Product Options

wired	Standard (HDMI type) Data link cable
wireless	High speed wi-fi , Approx. 6 hours of battery life